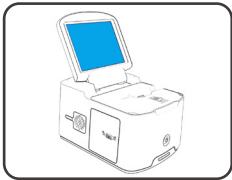


Blood Gas Analyzer Model No.: BGA-102

Quick Operation Instructions for Use

The **Quick Operation Instruction** is a reference for **Wondfo BGA-102** application. Please read the entire **User Manual** before using it or running any test.



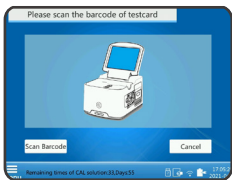
1. Connect the power supply

- Connect the instrument with provided power supply adaptor and assigned voltage
- Turn on the instrument and enter into the **Log on** interface
- Enter the initial user name: **admin** and password: **123456**

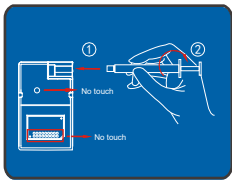


2. Test preparation

- Select corresponding sample type: **Arterial blood, Capillary blood or Liquid solution**
- Then click "**Start**" to begin the test



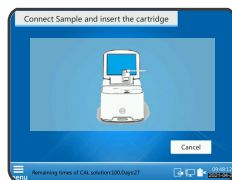
3. Take out a test card pouch, scan the 2-dimensional code on it.



4. Sample connection

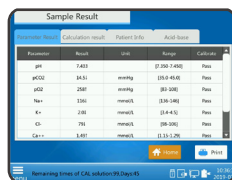
Take out the test card and connect it with syringe or capillary tube. Then follow clockwise direction to rotate the syringe or capillary tube 90 degrees, to ensure a solid connection.

- Please do not touch the hole on the test card when inserting syringe or capillary tube.
- Please do not touch the electrodes on the test card.



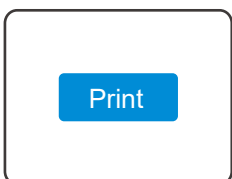
5. Run a test

Insert the test card into the test slot, evenly and gently press it down to the bottom. When you hear "click", it indicates that the test card has been inserted to right place. Subsequently, the instrument will start to run a test.



6. Get a result

After input the patient's information, the instrument will show the test result as soon as it finished initialization and calibration process.



7. Print

Click "Print" to print out the test result. Take out the test card and dispose it in accordance with local regulation and laws.