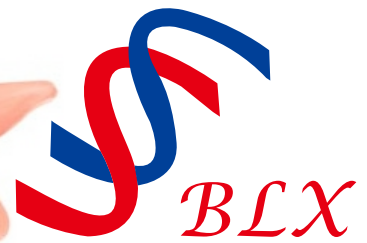


Advancing cytology diagnosis
Helping healthy living



BLX

Liquid-based Cytology Test

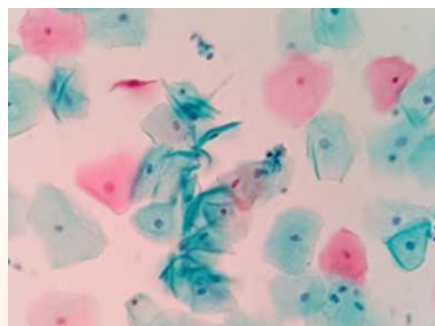
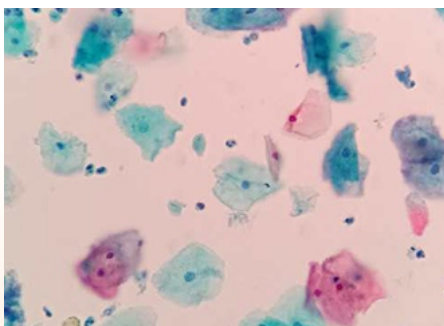
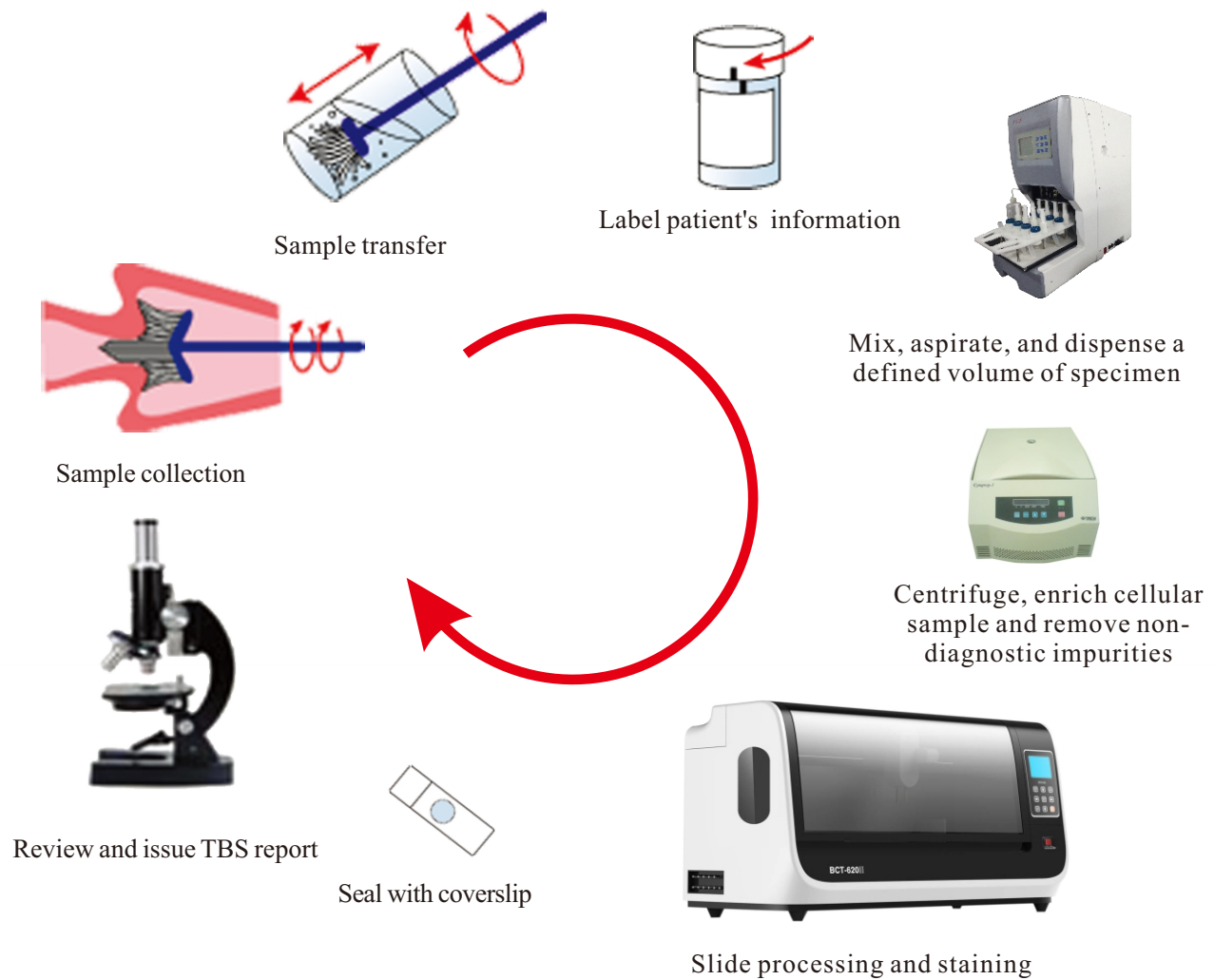


Tianjin Bai Lixin Bio-tech Co., Ltd.

BLX provides a reliable screening technology to allow for the detection of cancerous and precancerous changes enabling early intervention.

CONSISTENT QUALITY AND EFFICIENCY FROM THE FIRST STEP TO THE LAST

Slide Process



FEATURES

A. Sample Collection

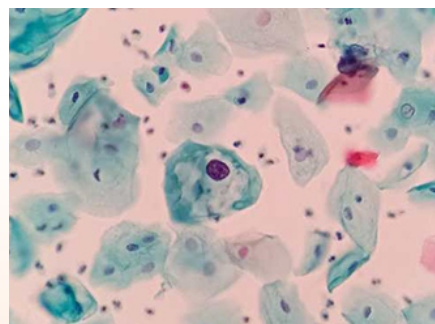
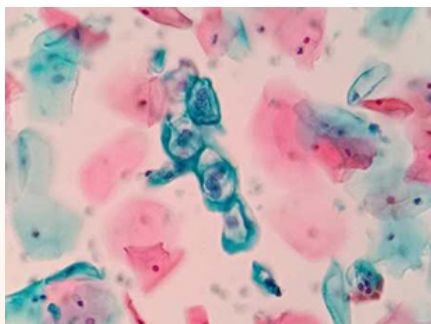


- Cervical brushes with detachable heads ensure that 100% of the cells arrive at the lab.
- Ethanol-based preservative is noncarcinogenic, eliminating concern over handling or storing the vial.
- Preserve multiple cells, like cervical cells, pleural fluid, urine and sputum sample.
- Multiple kinds of tests with one sample vial:
Our sampling kit can also be used for identification of HPV by Quantitative Melocular Amplification Technique (for E6/ E7 mRNA test) or by PCR technology.



B. Cell enrichment

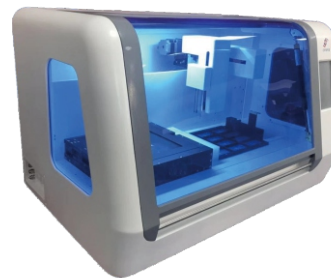
- The BLX cell enrichment process using BLX density reagent to remove nondiagnostic components from specimens like blood, mucus and inflammatory cells, minimizing dissatisfactory test results.
- The instrument automated and predictably mixes, aspirates and dispenses a defined volume of specimen, eliminates manual processing, reduces the risk of error and contamination.
- The flexible, automated process handles 1 to 12 samples per cycle within 5 minutes.
- The instrument features a simple user interface.



BLX Liquid-based Cytology Test Slide Processor

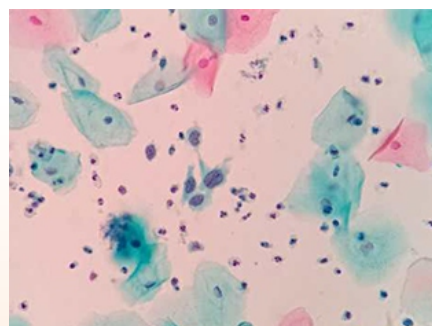
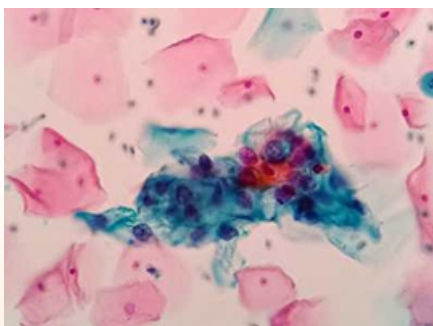


BCT-620 II



BCT-630

- Fully automated slide processing.
- Intuitive touch-screen interface puts the entire process at your fingertips.
- Different staining modes (Pap and HE stain) can be selected as needed.
- Adjustable parameters meet different needs of customers.
- Consistent results with staining in individual chambers using fresh reagents for every sample.
- Disposable tips and Dripping style staining avoid other samples to control risk of cross contamination.
- Self-test and reminder: alarm reminder when reagents are insufficient.
- Good image effect: keep cells in good shape and distribute them uniformly.
- Minimal hands-on-time allows staff to perform other tasks.
- Memory function: continue the operation which stopped due to power failure.
- Automated transparentizing process.
- The waste fluid can be vacuumed into the waste bottle through waste-vacuum-line during the staining process to maintain a safe and healthy workplace.



BCT-620II

BLX Liquid-based Cytology Test Slide Processor



Specimen handling

Specimen collection type:	BLX centrifugation vial
Sample identification:	Label all centrifugation vials and cytology slides with barcodes
On-board sample capacity:	BLX Liquid-based Cytology Test: Up to 24 samples

Dimensions

Height:	60 cm
Width:	108 cm
Depth:	53.5cm
Weight:	68 kg

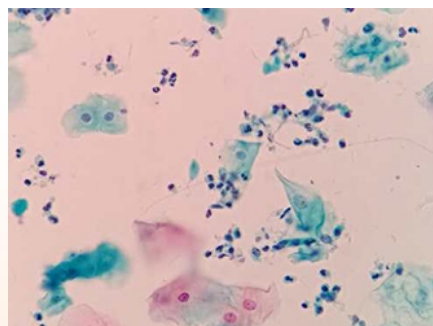
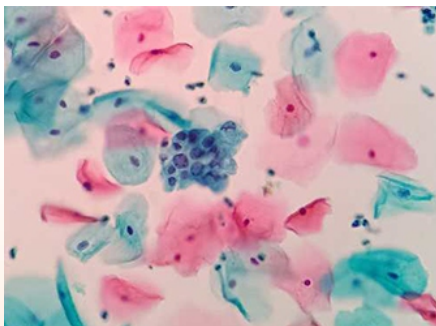
Environmental requirements

Temperature:	10℃ ~ 40℃
Humidity:	≤90%RH, non condensing
Atmospheric Pressure:	70 kPa~106 kPa

Electrical requirements

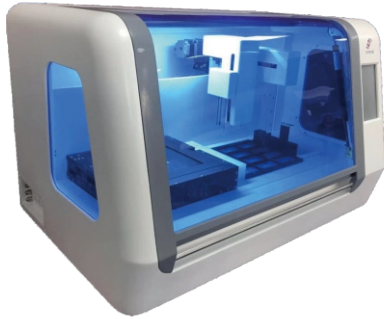
Input voltage:	AC220V /110V
Input line frequency:	50Hz±1Hz
Power:	300 VA

- Fully automated slide processing from preparation to transparentizing process.
- Complete a single run of 24 slides in 42 minutes.
- Minimal hands-on-time allows staff to perform other tasks.
- Memory function: continue the operation which stopped due to power failure.
- Automated transparentizing process to maintain a safe and healthy workplace.



BCT-630

BLX Liquid-based Cytology Test Slide Processor



Specimen handling

Specimen collection type:	BLX centrifugation vial
Sample identification:	Label all centrifugation vials and cytology slides with barcodes
On-board sample capacity:	BLX Liquid-based Cytology Test: Up to 12 samples

Dimensions

Height:	59 cm
Width:	92 cm
Depth:	62cm
Weight:	78 kg

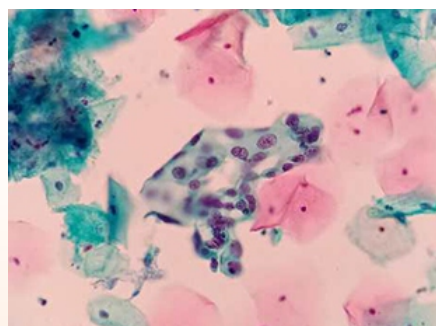
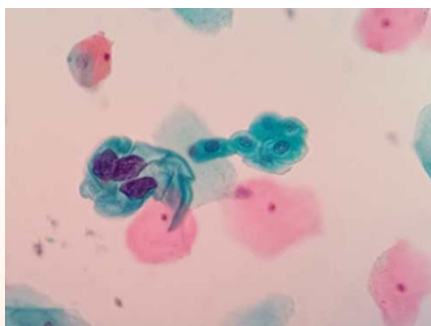
Environmental requirements

Temperature:	10℃ ~ 40℃
Humidity:	≤90%RH, non condensing
Atmospheric Pressure:	70 kPa~106 kPa

Electrical requirements

Input voltage:	AC220V /110V
Input line frequency:	50Hz±1Hz
Power:	300 VA

- Integrate centrifugation, preparation, staining and transparentizing process in one machine.
- Complete a single run of 12 slides in 45 minutes.
- Minimal hands-on-time allows staff to perform other task.
- Memory function: continue the operation which stopped due to power failure.
- Automated transparentizing process to maintain a safe and healthy workplace.



BLX Centrifugal Cytology Test Slide Processor



Applicable to Pathology Department, Obstetrics and Gynecology, Clinical Laboratory and Medical Center for Cervical Cancer screening and non-gynecology specimens (ascitic fluid, hydrothorax, needle aspiration cells, urine, sputum specimen) processing.



Pap Stain



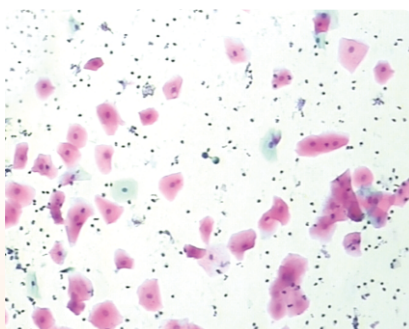
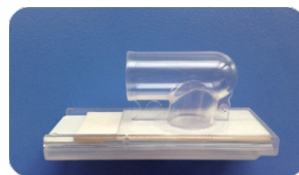
Buffer Solution



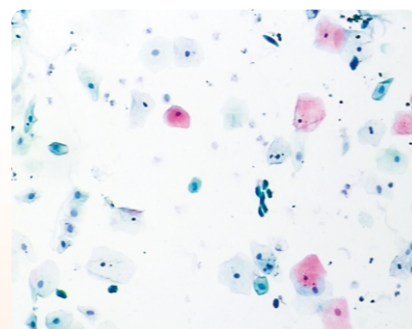
Green Transparentizing Reagent



Preservative Fluid



Sputum



Urine

Founded in 2005, Tianjin Bai Lixin Bio-tech Co., Ltd. is a medical technology company that serves healthcare institutions, life science researchers, and clinical laboratories.

BLX strives to make advances toward greater diagnostic certainty for customers by providing them with cutting-edge technology.

BLX is committed to women's health, and focus on early disease detection and diagnostic accuracy and cervical cancer screening. We provide innovative solutions for clinical management, and reduce dissatisfaction and patient recalls.

BLX provides broad range of medical supplies, devices, laboratory equipment and diagnostic products, such as cytology test slide processor and corresponding consumables.

We are always seeking great people, distributors, sales and engineers, to join our company on its journey to greatness.

Contact your BLX representative today to learn more about the BLX Liquid-based Cytology Test.

Certification

CE, EN ISO 13485: 2016



Tianjin Bai Lixin Bio-tech Co., Ltd.



Management
System
EN ISO
13485:2016

www.tuv.com
ID 0000042938



Address: L-201, 6th Road, Hi-tech Development,
Hi-tech Green Industry Base, Tianjin, China.
Tel: +86-22-87899438
Fax: +86-22-87890061
Mobil: +86-13920435932
Zip Code: 300384
Website: www.tjblx.com
E-mail: tjblx@tjblx.com